



Issue 1

Newsletter of the AVRMC

April 2018

Layout's in Brief



Cleggworth is a model based heavily on Holmfirth station and taking much inspiration from the BBC TV series 'Last of the Summer Wine'. Originally a Bolton and District MRC Layout, this layout was bought by club members in 2012 and has since Undergone refurbishment and is once again available for the Exhibition circuit.

Cleggworth is currently operational and can be found in our Clubroom

Clubroom

This month's club news begins with the welcoming of:

David Ellis

David joins us after signing up on our latest open day, Welcome to the club David from all of us here at the AVRMC

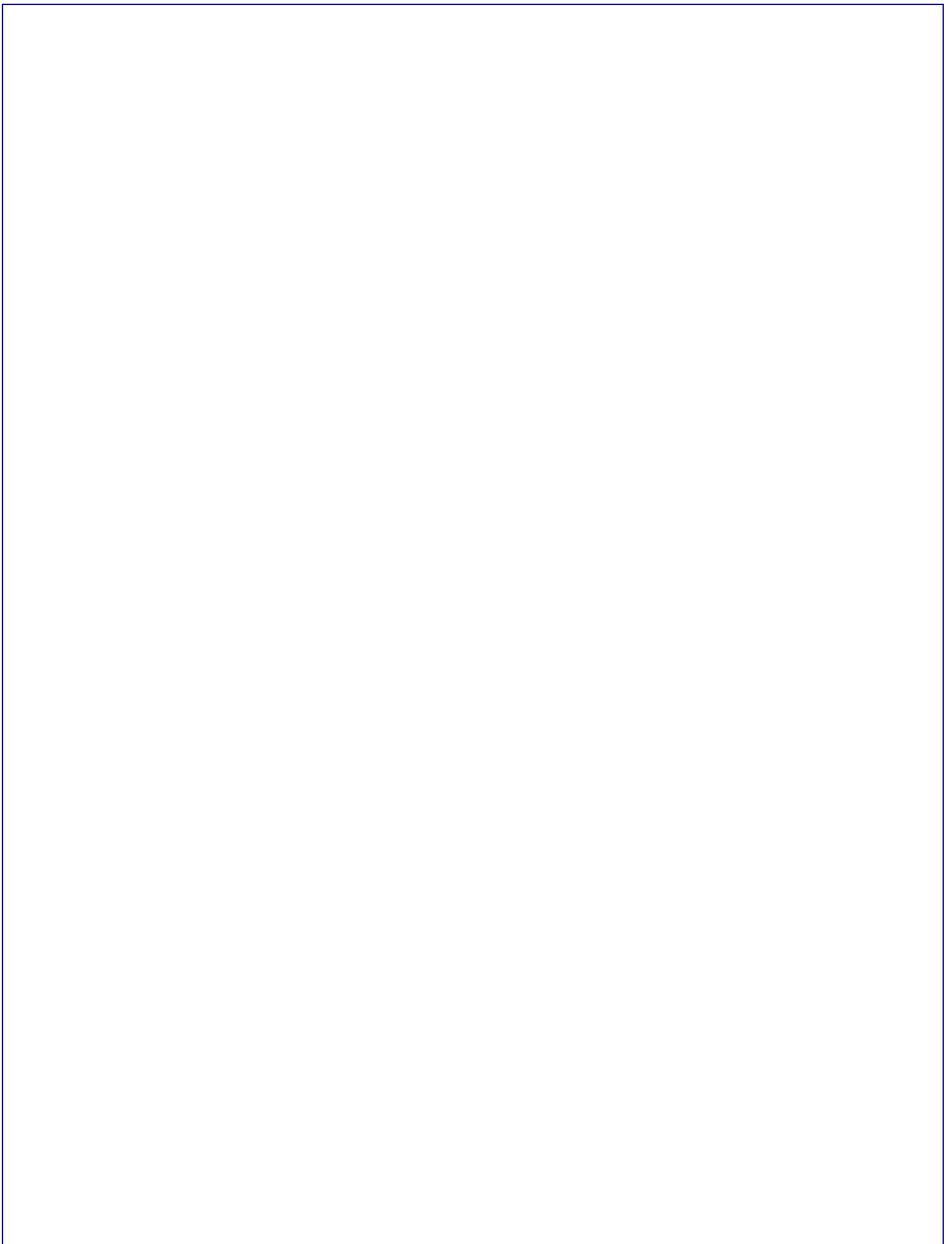
Whilst on the subject of new members we have a further 3 potential junior member currently waiting in the wings Let's hope they decide to stay with us as they will be most welcome to come and work on/operate layouts with us.

In other news our kitchen facilities have had a carpet installed which has improved the kitchen areas appearance, thanks to Roy and Peter for doing this.

Watch out next month as we look at the club room "Then & Now" ,when we arrived, and what it looks like now.

INSIDE THIS ISSUE

- 1 From the Editor
- 2 Junior Update
- 3 A Day at York
- 4 Spotlight on...Aireworth
- 5 Quiz & Events



From the Editor

By Oliver (Ollie) Harrison

Welcome to this first edition of “On Shed” at the time of writing this we have just finished our Open Day, were once again we opened our doors to the public for the 2nd time.

The day was great plenty of people came to see layouts operate from all scales OO-N, with only one complaint, nothing serious an 8 year old boy wrote “Not enough pointy nosed trains” (sadly we cannot please everyone) .

The Open Day overall was a success with nothing really going wrong we got lots of great feedback and the catering was superb.

I would like to take a moment to thank everyone who turned up on the day including the ladies in the kitchen for without you all we could not have done it.

With a range of activates going on both in & out of the Club room it can be hard to keep track of what has happened, so if you have an activity, task or experience you think is worth mentioning please feel free to ether grab me in the club and talk to be about it (I will happily take notes) or better yet write it yourself as a “first hand” account always reads better.

While I am on the subject of “write ups” may I ask members to think about one for their own layouts for both this newsletter and the website, if we have these going forward we can better promote both the club as a whole and the individual layouts bearing in mind the number of layouts that people are unaware are based at the club. If you cannot think what you want put down once again grab me on a club night and give me some details I will be more than happy to help.

The next issue will be published 31st May once again anyone wanting to submit something please see me before then.

Junior News

John Stokes

After a couple of years of them just wanting to play trains and working on an N gauge layout, we have now got one of the junior members which is only 14 years old, and interested in building a complicated loco kit and what a kit to start off with, a British Rail 9F etched nickel steel chassis and valve gear with a resin body made and supplied by Branch Lines.

After looking over and studying the paper work that came with the kit, he started to put together a list of the components that he needed to complete the kit, wheels, axles, top hat bearings, gear box with gears, motor and weights for the body and chassis.

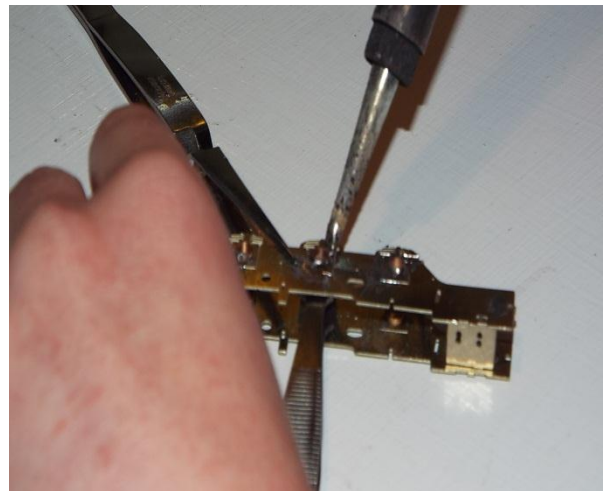
Members of AVRMC have come up with all the above components to help this junior member build his first loco kit. One of the senior members has provided such things like tools, axle levelling jig, soldering iron and soldering items needed in the construction of the kit.

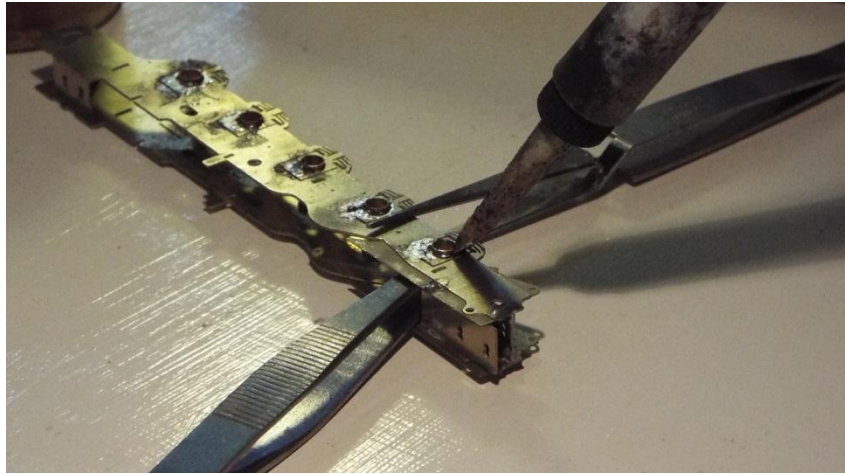
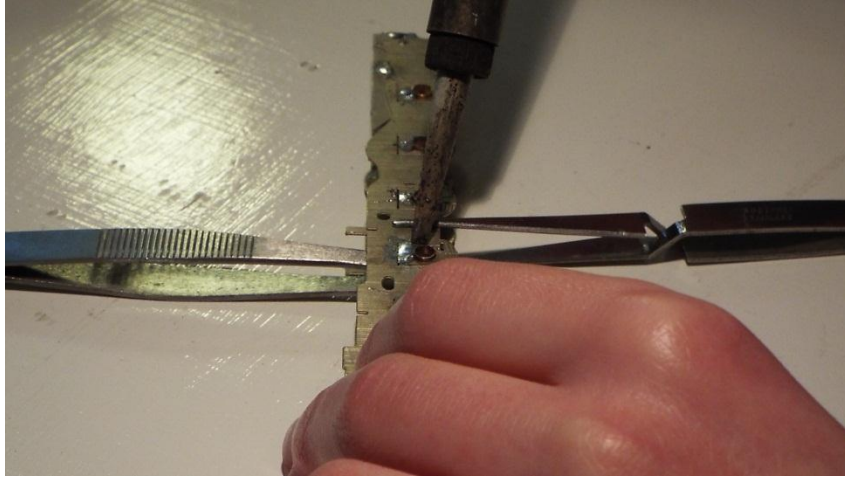
Progress has been slow in the construction of the kit due to Easter Holidays and an Open Day, now he can get on with building his loco with the help of the members of the Club.

Starting with taking out the side frames and some of the spacers he has started to put together the chassis, by soldering in some of the spacer to one of the side frames and taking on the other side frames.

The Watchword is: **TIME** (take your time) do not rush.

(Photos of Alistair at work and work done)





All Images above show the on the work involved in building this BR Std 9F
All Images by P Hopps

Layout Spotlight on... Aireworth

Aireworth is a 3mm scale, 12mm gauge layout and demonstrates the benefits of the scale; ie more railway in a given space than "OO" and bigger than "N" gauge scale making it easier to model. The layout was constructed by Mr Philip Kirtley and help by Mr Peter Langthorne in the 1970's, and was designed from the beginning to be operated prototypically by several operators in both a Club and Exhibition environment.



Being set in the industrial area of West Yorkshire, this fictitious layout is of a typical Northern Town Station with railway of the L&Y, Midland and NER origins and features scratch built scale models of prominent KEIGHLEY buildings. You may recognise Carnegie Library or the Town Hall and seasoned rail travellers should notice the back of Cavendish Street. All buildings are restored to their former glory with all blemishes removed. A photo spread featuring Aireworth appeared in Model Railways, November 1993 issue.

The overall size of the layout was 25'ft by 8'ft and as now been extended to 25'ft by 10'ft wide, this gives a 2'ft wide extension of one board at the side of the station board and a lift up section at the Nursery Close end, the lift up section add is so that us old portly operators can easily get into the middle to operate instead of having to duck under the layout to get in or out, it also gives us more room to move around inside without bumping into each other.

The layout includes a large Terminal Station at one end for a full passenger time table service, a Freight Yard in the middle to give lots of work for the operator, make up and braking down goods trains, a comprehensive Loco Shed at the other end for the arrival and depar-

ture of all locos. Round the back we have an incline which takes all the stock up to or down from the high level, a four track main line traverses across the station and front of layout in both directions, for the running of trains around, for viewing before they are stabled around the back of the layout.



There are four control positions one for the Station, one for the Goods Yard, one for the Loco Depot and one for the Main Fiddle Yard.

Since the demise of Tri-ang TT over fifty Years ago the stock running on Aireworth is still going strong.

Aireworth in the past have tried to run both Tri-ang TT and Three Millimetre Society products together, but suffered with stock coming off and now only runs Tri-ang TT or Tri-ang may have beens or Three Millimetre products fitted on to Tri-ang chassis.

Locos are a mixture of Tri-ang and Three Millimetre Society white metal kits, coaches are Tri-ang, Three Millimetre and Kitmaster on Tri-ang chassis, wagons are Tri-ang and Three Millimetre on Tri-ang chassis.

The Three Millimetre Society came into being in the late 1960's and they have available to its members a vast array of locos, coaches and wagons kits. Also available is a comprehensive components list of track and scenic items. It has helped and contributed to the development of Aireworth and still helps in keeping it in running order.

Now in its senior years it is being housed and revamped to its former glory, at Aire Valley Railway Modellers Club, where the time table is still being operated.

A Day at York Exhibition

By John Stokes

On Saturday March 31st the club organised a day out to York Show at the York racecourse for 14 of the members of the club.

The day started with 12 of us meeting up at the local café for our breakfast and plenty of banter before we caught the train to Leeds, we meet up with one of our party en-route at Shipley station but the other member of our party had to catch a train from Halifax stations but we all met-up on the station platform at Leeds, at the meeting time set and still the banter flowed, while we were waiting for the train some of them try they luck at a free cab ride to Edinburgh, the driver was a friendly lass, but she said good bye and left on time with her train.

Our train arrived and we set of for York and still the banter flowed, arriving at York some of the lucky ones got a free bus ride to the show the rest of us had to pay, we all had to pay to get in, the show was good but no trader, demo operator or layouts stood out as being outstanding. Some of us had lunch, dinner, afternoon snack and some of us had Drink! Drink in the dining room on the top floor.

After we had all finished eating we made our separate ways down calling at different places to buy the items that members wanted, we then all meet outside to catch the bus back into York and to the our next meeting point the Duke of York on the station, Yes the banter and the drink was plenty.

Our journey back to Leeds was mostly uneventful but the banter was still there, at Leeds we said good bye to one of the lads and we would see him next time at the club, has the rest of us made a dash for our train back to Keighley, at Shipley we said good bye to another member and we would see him next time at the club, we then continued on our way back to Keighley.

At Keighley we all said our good byes and to see everyone at the club the next day.

A good day out was had by all.

Come and see us at the club, you will be made most welcome.

Quiz/Question Time

Can you name the last commercially built steam locomotive built by British Railways?

What is the name of the Ex-LNER A2 that is due to return to mainline working order? (Clue Here's one I made earlier).

Fill in the missing word below



Which railway company did John Aspinall become the first General Manager of?

How many Britannia class 7MT Locomotives were **NOT** Named (bonus question, do you know the numbers also)?

Notable Dates

The following Events listed below were correct at the time of publishing any detail amendment will be publish next issue or passed on by their respective organiser

Mirfeild Show 19th-20th May

2 layouts will be in attendance Mozzerdale &
Ikeuno
(Only on the 19th)

Model Railway Show at Middleton Railway 16-17th June

Cleggworth will be visiting the Middleton Railway, Leeds for a show
Put on by the Railway

Summer Open Day Sunday 26th August

At the Clubroom 10AM-4PM

Members are asked to come along and operate layouts to support/promote the club
As we will once again be open to the public

Shipley Model Railway Society 2018 Exhibition

BAILDON RECREATION CENTRE, SHIPLEY

Saturday 15th and Sunday 16th September 2018

Members will be asked once again to help support Shipley club by
Taking part in their show

Like what you've just heard? Then why not come and join us at:

Aire Valley Railway Modellers Club (AVRMC)

Melbourne House Dalton Lane, Keighley BD21 4JH

Monday evenings 7.00pm to 11.00pm

Tuesday evenings 7.00pm to 11.00pm

Thursday evenings 7.00pm to 11.00pm

Saturday afternoon 1.00pm to 5.00pm

